



OUR **VET** RANGE AT A GLANCE

2020 v1

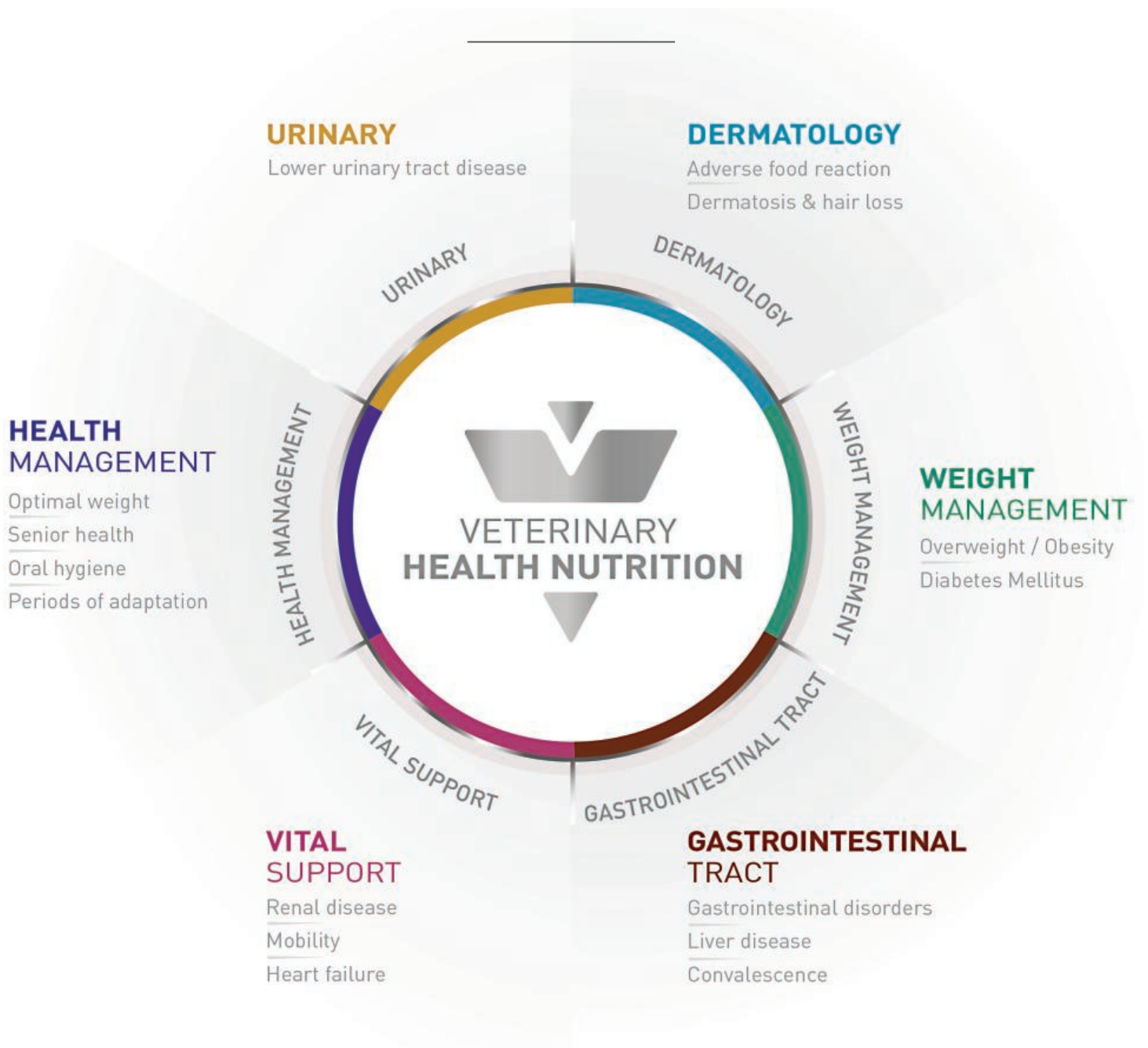


WHAT SETS US APART

ROYAL CANIN® recognizes that there are fundamental differences between breeds, sizes, and life stages that go well beyond physical appearance.

Through science and research we have gained a profound understanding of these differences. We apply our knowledge to developing innovative nutritional solutions that respect each individual pet's needs. At ROYAL CANIN®, we obsess over details, providing tailored nutrition to magnify cats and dogs beauty.

VETERINARY HEALTH NUTRITION



**URINARY S/O**

DRY

Bag • 400g, 1.5kg, 3.5kg, 7kg, 9kg

Lower urinary tract disease in adult cats

**URINARY S/O**

LOAF

WET

Pouch • 85g (12 in a box)

Lower urinary tract disease in adult cats

**URINARY S/O**MORSELS
IN GRAVY

WET

Pouch • 85g (12 in a box)

Lower urinary tract disease in adult cats

**URINARY S/O**

DRY

MODERATE CALORIE

Bag • 400g, 1.5kg, 3.5kg, 7kg, 9kg

Lower urinary tract disease in adult cats **with tendency to be overweight****URINARY S/O**MORSELS
IN GRAVY

WET

MODERATE CALORIE

Pouch • 85g (12 in a box)

Lower urinary tract disease in adult cats **with tendency to be overweight**


ALLERGENIC

DRY

Bag • 2kg, 4kg

Adverse reaction to food in adult cats


SKIN & COAT

 THIN SLICES
IN GRAVY

WET

Pouch • 85g (12 in a box)

 Dermatitis and hair loss in **young cats in post-neutering stage and adult neutered cats with sensitive skin, up to 7 years of age**

HYPOALLERGENIC

DRY

Bag • 400g, 2.5kg, 4.5kg

Adverse reaction to food in adult cats


SENSITIVITY CONTROL

DRY

Bag • 400g, 1.5kg, 3.5kg

Adverse reaction to food in adult cats


SENSITIVITY CONTROL
CHICKEN WITH RICE

 THIN SLICES
IN GRAVY

WET

Pouch • 85g (12 in a box)

Adverse reaction to food in adult cats


SKIN & COAT

DRY

Bag • 400g, 1.5kg, 3.5kg

 Dermatitis and hair loss in **young cats in post-neutering stage and adult neutered cats with sensitive skin, up to 7 years of age**


SATIETY
 WEIGHT MANAGEMENT

DRY

Bag • 400g, 1.5kg, 3.5kg, 6kg

Weight loss and maintenance after weight loss


SATIETY
 WEIGHT MANAGEMENT

 THIN SLICES
 IN GRAVY

WET

Pouch • 85g (12 in a box)

Weight loss and maintenance after weight loss


DIABETIC

DRY

Bag • 400g, 1.5kg, 3.5kg

Diabetes Mellitus

DIABETIC

 THIN SLICES
 IN GRAVY

WET

Pouch • 85g (12 in a box)

Diabetes Mellitus

**GASTROINTESTINAL**

DRY

Bag • 400g, 2kg, 4kg

Gastrointestinal disorders

**GASTROINTESTINAL KITTEN**ULTRA SOFT
MOUSSE

WET

Can • 195g

Gastrointestinal disorders in kittens from weaning to adulthood and gestating/lactating mothers

**GASTROINTESTINAL**THIN SLICES
IN GRAVY

WET

Pouch • 85g (12 in a box)

Gastrointestinal disorders

**GASTROINTESTINAL**

DRY

MODERATE CALORIE

Bag • 400g, 2kg, 4kg

Gastrointestinal disorders in overweight cats or cats prone to being overweight

**GASTROINTESTINAL**

DRY

FIBRE RESPONSE

Bag • 400g, 2kg, 4kg

Gastrointestinal disorders

**GASTROINTESTINAL**THIN SLICES
IN GRAVY

WET

MODERATE CALORIE

Pouch • 85g (12 in a box)

Gastrointestinal disorders in overweight cats or cats prone to being overweight

**GASTROINTESTINAL**

DRY

HAIRBALL

Bag • 400g, 2kg, 4kg

Gastrointestinal disorders

**HEPATIC**

DRY

Bag • 2kg, 4kg

Liver disease

**GASTROINTESTINAL KITTEN**

DRY

Bag • 400g, 2kg

Gastrointestinal disorders in kittens from weaning to adulthood and gestating/lactating mothers

**RECOVERY**ULTRA SOFT
MOUSSE

WET

Can • 195g

Convalescence period

**RECOVERY
LIQUID**

LIQUID

Bottle • 200ml (3 in a pack)

Convalescence period (for tube-feeding)

**EARLY RENAL**

DRY

Bag • 400g, 1.5kg, 3.5kg, 6kg

Kidney disease

**RENAL WITH FISH**

DRY

Pouch • 85g (12 in a box)

Kidney disease

**EARLY RENAL**THIN SLICES
IN GRAVY

WET

Pouch • 85g (12 in a box)

Kidney disease

**RENAL SELECT**

DRY

Bag • 400g, 2kg, 4kg

Kidney disease

**RENAL**

DRY

Bag • 400g, 2kg, 4kg

Kidney disease

**RENAL SPECIAL**

DRY

Bag • 400g, 2kg, 4kg

Kidney disease

**RENAL**

LOAF

WET

Pouch • 85g (12 in a box)

Kidney disease

**MOBILITY**

DRY

Bag • 400g, 2kg, 4kg

Mobility issues

**RENAL WITH BEEF**

LOAF

WET

Pouch • 85g (12 in a box)

Kidney disease

**RENAL
LIQUID**

LIQUID

Bottle • 200ml (3 in a pack)

Convalescence period (for tube-feeding)

**RENAL WITH CHICKEN**

LOAF

WET

Pouch • 85g (12 in a box)

Kidney disease



COMING
SOON**PILL ASSIST**

WET

Pouch • 45g

Period of adaptation



URINARY S/O

DRY

Bag • 2kg, 7.5kg, 13kg

Lower urinary tract disease
in adult dogs

URINARY S/O

DRY

MODERATE CALORIE

Bag • 1.5kg, 6.5kg, 12.5kg

Lower urinary tract disease in
adult dogs **with tendency to be
overweight**

URINARY S/O

LOAF (WET)

Can • 200g, 410g

Lower urinary tract disease
in adult dogs

URINARY S/O

THIN SLICES
IN GRAVY (WET)

MODERATE CALORIE

Pouch • 100g (12 in a box)

Lower urinary tract disease in
adult dogs **with tendency to be
overweight**

URINARY S/O

THIN SLICES
IN GRAVY (WET)

Pouch • 100g (12 in a box)

Lower urinary tract disease
in adult dogs

URINARY S/O

DRY

SMALL DOGS **S**

Bag • 1.5kg, 4kg, 8kg

Lower urinary tract disease
in adult **small breed dogs
(under 10kg)**

URINARY S/O AGEING 7+

DRY

Bag • 1.5kg, 3.5kg, 8kg

Lower urinary tract disease in
aging dogs **(over 7 years old)**

URINARY U/C

DRY

Bag • 2kg, 7.5kg, 14kg

Lower urinary tract disease:
management of metabolic
uroliths recurrence (urate,
xanthine, cystine)

URINARY S/O AGEING 7+

LOAF (WET)

Pouch • 85g (12 in a box)

Lower urinary tract disease in
aging dogs **(over 7 years old)**

**ALLERGENIC**

DRY

Bag • 1.5kg, 3kg, 8kg

Adverse reaction to food in adult dogs

**HYPOALLERGENIC**

DRY

Bag • 2kg, 7kg, 14kg

Adverse reaction to food in adult dogs

**HYPOALLERGENIC**

LOAF (WET)

Can • 200g, 400g

Adverse reaction to food in adult dogs

**HYPOALLERGENIC**

DRY

MODERATE CALORIE

Bag • 1.5kg, 7kg, 14kg

Adverse reaction to food in adult dogs
with tendency to be overweight**HYPOALLERGENIC**

DRY

SMALL DOGS **S**

Bag • 1.5kg, 7kg, 14kg

Adverse reaction to food in adult
small breed dogs (under 10kg)**SENSITIVITY CONTROL**

DRY

Bag • 1.5kg, 7kg, 14kg

Adverse reaction to food in adult dogs

**SENSITIVITY CONTROL**

CHICKEN WITH RICE

LOAF

(WET)

Can • 420g

Adverse reaction to food in adult dogs

**SENSITIVITY CONTROL**

DUCK WITH RICE

LOAF

(WET)

Can • 420g

Adverse reaction to food in adult dogs

**SKIN CARE**

DRY

Bag • 2kg, 8kg, 11kg

Dermatitis and hair loss in adult dogs

**SKIN CARE**

DRY

SMALL DOGS **S**

Bag • 2kg, 4kg

Dermatitis and hair loss in adult **small**
breed dogs (under 10kg)**SKIN CARE PUPPY**

DRY

SMALL DOGS **S**

Bag • 2kg, 4kg

Dermatitis and hair loss in **junior small**
breed dogs (adult weight under 10kg)**SKIN SUPPORT**

DRY

Bag • 2kg, 7kg

Adverse reaction to food in adult dogs





SATIETY WEIGHT MANAGEMENT

DRY

Bag • 1.5kg, 6kg, 12kg

Weight loss and maintenance
after weight loss



SATIETY WEIGHT MANAGEMENT

LOAF

WET

Can • 195g, 410g

Weight loss and maintenance
after weight loss



SATIETY WEIGHT MANAGEMENT

DRY

SMALL DOGS



Bag • 500g, 1.5kg, 3kg, 8kg

Weight loss and maintenance
after weight loss in adult **small**
breed dogs (under 10kg)



DIABETIC

DRY

Bag • 1.5kg, 7kg, 12kg

Diabetes Mellitus



DIABETIC SPECIAL

LOAF

WET

LOW CARBOHYDRATE

Can • 195g, 410g

Diabetes Mellitus

**GASTROINTESTINAL**

DRY

Bag • 2kg, 7.5kg, 15 kg

Gastrointestinal disorders

**GASTROINTESTINAL**

DRY

MODERATE CALORIE

Bag • 2kg, 7.5kg, 15 kg

Gastrointestinal disorders in
overweight dogs or dogs
prone to being overweight**GASTROINTESTINAL**

LOAF

WET

Can • 200g, 410g

Gastrointestinal disorders

**GASTROINTESTINAL PUPPY**

DRY

Bag • 1kg, 2.5kg, 10kg

Gastrointestinal disorders in **puppies**
from weaning to adulthood and
gestating/lactating bitches**GASTROINTESTINAL**

DRY

HIGH FIBRE

Bag • 2kg, 7.5kg, 14kg

Gastrointestinal disorders

**GASTROINTESTINAL PUPPY****ULTRA SOFT
MOUSSE**

WET

Can • 195g

Gastrointestinal disorders in **puppies**
from weaning to adulthood and
gestating/lactating bitches**GASTROINTESTINAL**

DRY

LOW FAT

Bag • 1.5kg, 6kg, 12kg

Gastrointestinal disorders

**HEPATIC**

DRY

Bag • 1.5kg, 6kg, 12kg

Liver disease

**GASTROINTESTINAL**

LOAF

WET

LOW FAT

Can • 200g, 400g

Gastrointestinal disorders

**HEPATIC**

LOAF

WET

Can • 200g, 420g

Liver disease



RECOVERY

ULTRA SOFT
MOUSSE (WET)

Can • 195g

Convalescence period



GI HIGH ENERGY LIQUID

LIQUID

Bottle • 200ml (3 in a pack)

Convalescence period (for tube-feeding)



GI LOW FAT LIQUID

LIQUID

Bottle • 200ml (3 in a pack)

Convalescence period (for tube-feeding)



RECOVERY LIQUID

LIQUID

Bottle • 200ml (3 in a pack)

Convalescence period (for tube-feeding)

**EARLY RENAL**

DRY

Bag • 2kg, 7kg, 14kg

Kidney disease

**RENAL**

DRY

SMALL DOGS **S**

Bag • 500g, 1.5kg, 3.5kg

Kidney disease in adult **small breed dogs** (under 10kg)**EARLY RENAL**THIN SLICES
IN GRAVY

WET

Pouch • 100g (12 in a box)

Kidney disease

**RENAL SELECT**

DRY

Bag • 2kg, 10kg

Kidney disease

**RENAL**

DRY

Bag • 2kg, 7kg, 14kg

Kidney disease

**RENAL SPECIAL**

DRY

Bag • 2kg, 10kg

Kidney disease

**RENAL**THIN SLICES
IN GRAVY

WET

Pouch • 100g (12 in a box)

Kidney disease

**RENAL SPECIAL**

LOAF

WET

Can • 410g

Kidney disease

**RENAL**

LOAF

WET

Can • 200g, 410g

Kidney disease

**MOBILITY C2P+**

DRY

Bag • 2kg, 7kg, 12kg

Mobility issues



MOBILITY C2P+

LOAF

WET

Can • 400g

Mobility issues



MOBILITY C2P+

DRY

SMALL DOGS **S**

Bag • 500g, 1.5kg, 3.5kg

Mobility issues in adult **small** breed dogs (under 10kg)



CARDIAC

DRY

Bag • 2kg, 7kg, 14kg

Heart failure



CARDIAC

LOAF

WET

Can • 200g, 410g

Heart failure



RENAL LIQUID

LIQUID

Bottle • 200ml (3 in a pack)

Convalescence period (for tube-feeding)

COMING
SOON**PILL ASSIST**

WET



Pouch • 224g

For adult dogs over 10 kg
to ease pills administration**PILL ASSIST**

WET



Pouch • 90g

For adult dogs under 10 kg
to ease pills administration

HEALTH IS OUR OBSESSION

Check out our **SPT** and **PRO** product ranges

